



# Week 5 Term 1 March 2021

School website [www.stmarys.ac.nz](http://www.stmarys.ac.nz)

School Facebook [www.facebook.com/groups/stmarysschoolwanganui](https://www.facebook.com/groups/stmarysschoolwanganui)

School App From the Google Apps / Play Store: [SchoolAppsNZ St Mary's School](#)

Kia ora koutou

So **Meet the Teacher Interviews** have been bumped again. As we are well underway with the term and we have very full calendars for our staff... we have decided instead of holding interviews we will offer a variety of ways to meet/communicate with your child's teacher and also share your hopes and wishes for the year.

First and foremost, please ensure you have completed and sent in the interview sheet where you share your hopes, wishes and concerns with us. These are so important so that we can be aware of things that might impact on their learning and time at school.

Secondly, we will be sending out an invitation early next week for a school BBQ. All teachers will be in attendance and it is a great opportunity to meet us but also meet each other. We will put out some sports equipment and provide a sausage sizzle.

Thirdly, please email or phone your child's teacher if you would like to set up a time to meet. We will make ourselves available.

Our teachers contact details are as follows:

JLC:

Dallas Limpus (Junior Team Leader): [dallasl@stmarys.ac.nz](mailto:dallasl@stmarys.ac.nz)

Kate Linklater: [katiel@stmarys.ac.nz](mailto:katiel@stmarys.ac.nz)

Room 3:

Heather Loveridge: [heatherl@stmarys.ac.nz](mailto:heatherl@stmarys.ac.nz)

Room 4:

Lewis Waite: [lewisw@stmarys.ac.nz](mailto:lewisw@stmarys.ac.nz)

Room 5:

Amanda Calver: [amandab@stmarys.ac.nz](mailto:amandab@stmarys.ac.nz)

Room 6:

Therese Couper: [theresec@stmarys.ac.nz](mailto:theresec@stmarys.ac.nz)

Room 7:

Nicola Harper: [nicolah@stmarys.ac.nz](mailto:nicolah@stmarys.ac.nz)

Room 8:

Cath Daignault (Middle Team Leader): [cathd@stmarys.ac.nz](mailto:cathd@stmarys.ac.nz)

Room 9:

Chris Scudder: [chriss@stmarys.ac.nz](mailto:chriss@stmarys.ac.nz)

Room 10:

Tash Casey: [tash@stmarys.ac.nz](mailto:tash@stmarys.ac.nz)

Room 11:

Ian Kerr (Senior Team Leader): [iank@stmarys.ac.nz](mailto:iank@stmarys.ac.nz)

Deputy Principal:

Kate Linklater: [katiel@stmarys.ac.nz](mailto:katiel@stmarys.ac.nz)

Principal:

Jacqui Luxton: [jacquil@stmarys.ac.nz](mailto:jacquil@stmarys.ac.nz)

We have our first whole school **Mass on Wednesday the 17th of March at 5.30pm** at St Mary's Church. We ask that you attend along with your children as this is an important time for our whole school to gather and worship together. This was a commitment you made when enrolling your child at our school. For this mass we will ask children to sit with their families.

In this newsletter you will find information instructions on giving feedback on our policies and procedures. This term we are asking for feedback around home learning. This is your opportunity to shape how we do things at St Mary's School.

Mā te Atua e manaaki

Jacqui Luxton

SCHOOL MASS  
WEDNESDAY  
17TH MARCH

5:30PM

@ ST MARY'S CHURCH



Children encouraged to wear green for  
St Patrick's feast day



**Policies and procedures** are the guide map for how we operate at St Mary's School. This is your opportunity to **help shape the way we operate**. We would love your feedback and suggestions. Every term a number of policies come up for review on a 3 year cycle. Some policies are reviewed by the Board of Trustees, The staff or caregivers, sometimes all three. Each term I will put in a reminder to have a look. Follow the instructions below and have your say!



Documents under review	Who reviews them?
<b>Term 1 2021</b>	
<a href="#">Home Learning</a>	Board, staff, and parents
<a href="#">Finance and Property Management Policy</a>	Board


<https://www.schooldocs.co.nz/>

Community username **stmarysac**

Community password **icic**

### Instructions for reviewers

1. Follow the link to each policy in the table above.
2. Read the policy.
3. Click the red Policy Review icon at the right-hand top corner of the page. A new screen will appear.
4. Select your role (board member, staff member, or parent/caregiver) from the drop-down list.
5. Enter your name (optional).
6. Submit your ratings and comments.

If you don't have internet access, school office staff can easily provide you with printed copies of the policy and the **review form**.





E Tipu e ako....  
Where learning grows....

### Pepeha

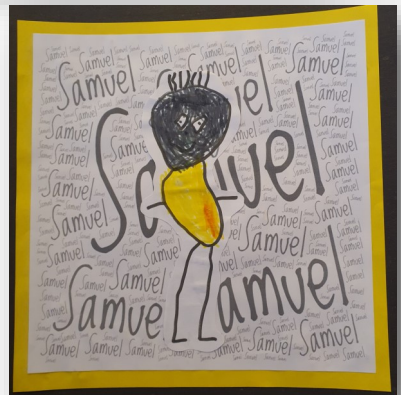
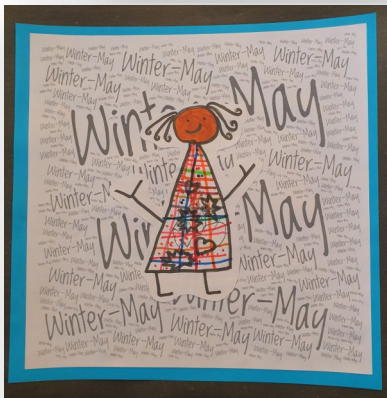
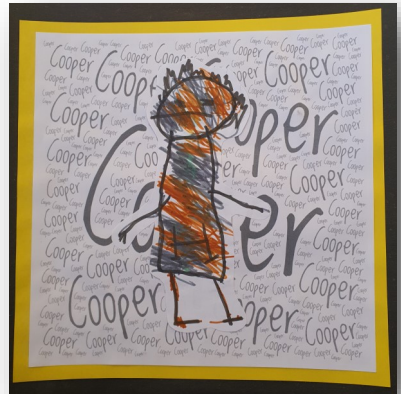
At St Mary's we are learning our Pepeha.  
A Pepeha is a way of introducing ourselves to each other.  
It's a way of sharing our stories, who we are and where we come from. Everyone has a Pepeha.



Tau ke te mahi, awesome work Room 8!

# From the JLC

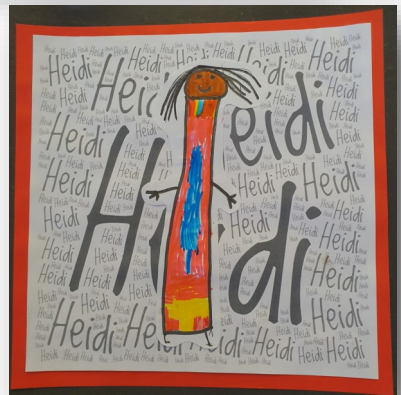
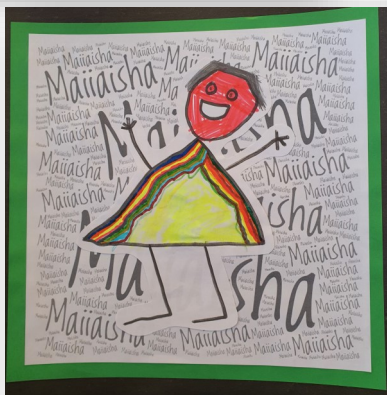
## We are all unique





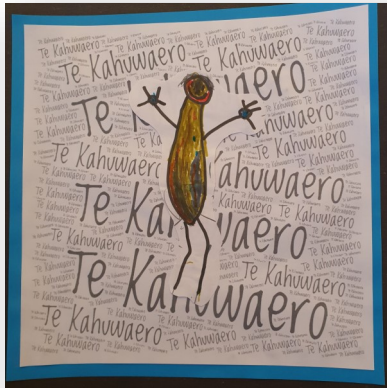
# From the JLC

## We are all unique



# From the JLC

## We are all unique

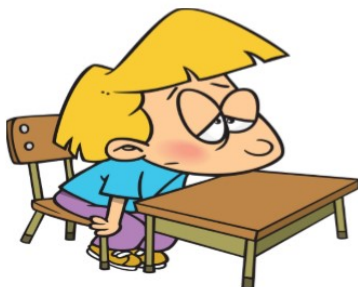
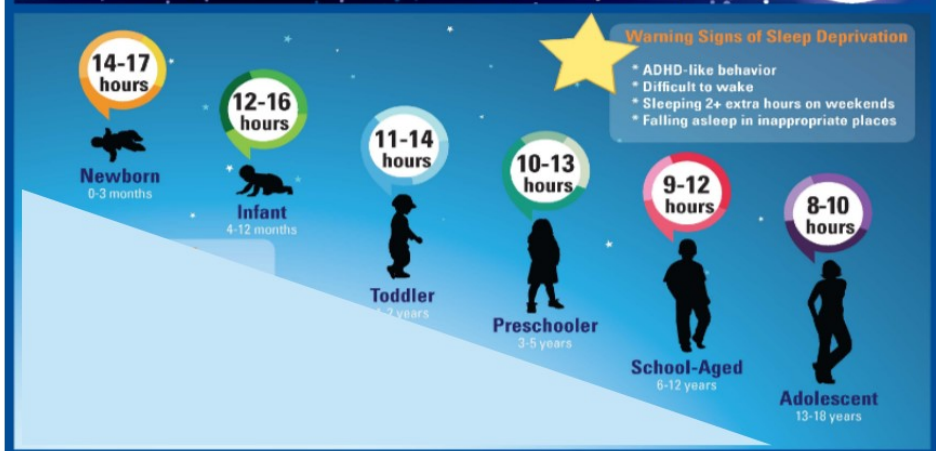




# Playground fun!



# Is Your Child Getting Enough Sleep?



We are noticing some very tired children...

tired learners struggle to focus and get the best out of their day.

AGE	Wake-up time						
	6:00AM	6:15AM	6:30AM	6:45AM	7:00AM	7:15AM	7:30AM
	Bed time						
5	6:45PM	7:00PM	7:15PM	7:30PM	7:30PM	8:00PM	8:15PM
6	7:00PM	7:15PM	7:30PM	7:30PM	8:00PM	8:15PM	8:30PM
7	7:15PM	7:15PM	7:30PM	8:00PM	8:15PM	8:30PM	8:45PM
8	7:30PM	7:30PM	8:00PM	8:15PM	8:30PM	8:45PM	9:00PM
9	7:30PM	8:00PM	8:15PM	8:30PM	8:45PM	9:00PM	9:15PM
10	8:00PM	8:15PM	8:30PM	8:45PM	9:00PM	9:15PM	9:30PM
11	8:15PM	8:30PM	8:45PM	9:00PM	9:15PM	9:30PM	9:45PM
12	8:15PM	8:30PM	8:45PM	9:00PM	9:15PM	9:30PM	9:45PM

# Uniform Reminders

We take great pride in our school and it begins with uniform! Students looked stunning as they arrived on Wednesday. We want these standards to stay high. Please remember hair ties should be Navy or Black, no nail polish, no rings or bracelets. Taonga and crosses are accepted but must be tucked in. Thank you for your efforts in ensuring our students are the best dressed in town.



- St Mary's Hat
- Navy and Red Check Tunic
- Black Roman Sandals

**ITS SUMMER UNIFORM TIME**

Please help us!  
Name things in at least 7 places.  
That way we can return misplaced items to their rightful owner.

PE Gear.  
St Mary's T-Shirt  
Navy Blue shorts

- St Mary's Hat
- White Shirt
- Navy and Red Check Skirt
- Black Roman Sandals

No  
Hat  
No  
Play

- St Mary's Hat
- Grey Shirt
- Grey Shorts
- Black Roman Sandals

**ITS SUMMER UNIFORM TIME**

Please help us!  
Name things in at least 7 places.  
That way we can return misplaced items to their rightful owner.

PE Gear.  
St Mary's T-Shirt  
Navy Blue shorts

- St Mary's Hat
- Navy Blue Shirt
- Grey Shorts
- Black Roman Sandals



**Please remember to name your child's uniform...**

**Name it, name it and name it again...**

**Vivid marker, fancy lables, twink pens, sewn in initials...**

**We have 260 of everything and it gets hard to return uniform if it is left behind at break.**



---

**Who to see...** If you have a query or concern regarding your child please see your child's Teacher first. If you still require assistance please see your child's Team Leader as follows:

**Junior Team**

Dallas Limpus: [dallasl@stmarys.ac.nz](mailto:dallasl@stmarys.ac.nz)

Students from JLC, Room 3, 4 and 5

**Middle Team**

Cath Dagnault: [cathd@stmarys.ac.nz](mailto:cathd@stmarys.ac.nz)

Students from Rooms 6, 7 and 8

**Senior Team**

Ian Kerr: [iank@stmarys.ac.nz](mailto:iank@stmarys.ac.nz)

Students from Rooms 9, 10 and 11







## HELLO LUNCHONLINE FAMILIES AT ST MARY'S SCHOOL

Healthy & Delicious

ORDER ON LINE  
YUMMY PITA PIT LUNCHES DELIVERED

PITA PIT AVAILABLE EVERY THURSDAY

JUMP ONLINE AND ORDER YOURS NOW  
[www.lunchonline.co.nz](http://www.lunchonline.co.nz)

If you don't have an account:  
It's simple, just go to [Lunchonline.co.nz](http://Lunchonline.co.nz) and set up a  
new account



 lunchonline  
[www.lunchonline.co.nz](http://www.lunchonline.co.nz)

Phone 0800 LOL LOL (0800 565 565)  
[info@lunchonline.co.nz](mailto:info@lunchonline.co.nz)

Healthy and affordable | Easy internet ordering

THE CATHOLIC PARISH OF WHANGANUI  
INVITE YOU TO JOIN IN OUR FELLOWSHIP

DISCO!  
GAMES!  
FOOD!



# Youth Group 2021 GROUP

PRAYER!  
ACTIVITIES!  
FELLOWSHIP!

26 FEBRUARY 5 MARCH 19 MARCH | CULLINANE  
COLLEGE  
6-8PM | AGED 12-15



## Update Contact Info



If you have shifted, had a new phone number, changed your emergency contacts or changed work numbers please let us know.

## Sandpit Toys...

**Do you have any **old toys** that would make excellent fun in the sandpit? We would love them!**

**Please drop them into the office.**



St Mary's School  
Whanganui

Absentee

Contacts

Links

Calendar

Newsletter

Term Dates

Sports

Alerts

From the Google  
Apps / Play Store:  
SchoolAppsNZ St  
Mary's School

**Please use our Absentee App when your child is sick. This makes things so much easier for us here at school. Please give a detailed reason as this helps us to monitor the spread of illness and to assign the correct absence code for the Ministry of Education.**



Kia Ora

My name is Vivienne East and I am a Registered Nurse based at the Whanganui Hospital. I visit St Mary's School throughout the school year offering support, advice and referrals for any health concerns that parents, caregivers or teachers may have.

Some of the health problems include: allergies, nutrition concerns, growth and development, immunisations, puberty concerns, bedwetting, toileting issues, vision and hearing, parenting support.

I can be contacted on my mobile on 021 373 212 or through the Whanganui Hospital on 06 348 3343 or you can email me on [vivienne.east@wdhb.org.nz](mailto:vivienne.east@wdhb.org.nz)

Nga Mihi

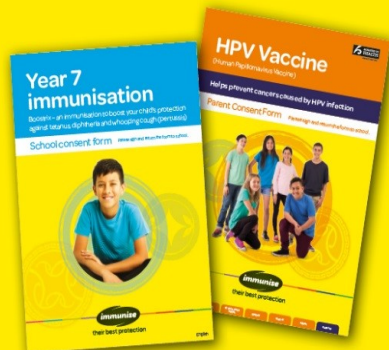
Viv

If your child is in **Year 7 or 8** they'll be offered important **free** immunisations at school. These will help protect them against serious diseases, and will also help protect your whānau and our wider community.

Ask your child for the consent form they've been given for you to read, sign and return to school.

*For more information:*

*Talk to the **Public Health Nurse**  
visit [health.govt.nz/imms-older-children](http://health.govt.nz/imms-older-children)  
or call **0800 Immune***





## March

### Wiki Rima / Week Five

Friday 5th:

- Gifted and Talented Arts

### Wiki Ono / Week Six

Tuesday 9th:

- Intermediate Club - Box Fit @ Iron Alley

Wednesday 10th:

- Technology @ Cullinane College Year 7 & 8
- Rotary Readers
- Assembly 2.15

Thursday 11th:

- Pita Pit go to lunchonline

Friday 12th:

- Super 6 Swimming
- Gifted & Talented Art

### Wiki Whitu / Week Seven

Wednesday 17th:

- Rotary Readers
- Technology @ Cullinane College Year 7 & 8
- Road Show Cullinane College

- **School Mass @ St Mary's Church 5.30pm**



Thursday 18th:

- Intermediate School Gala 11.30
- Pita Pit go to lunchonline

Friday 19th:

- Gifted & Talented Arts

### Wiki Waru / Week Seven

Tuesday 23rd:

- Combined Schools Swimming Sports

Wednesday 24th:

- Technology @ Cullinane College Year 7 & 8
- Rotary Readers
- Assembly 2.15

Thursday 25th:

- Central Football
- Pita Pit go to lunchonline
- Intermediate School Swimming

Friday 26th:

- Gifted & Talented Arts